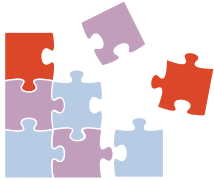


Best Practices for Admissions with GRE Scores

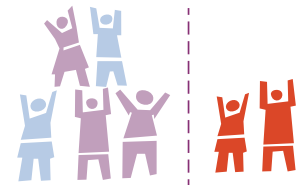


Do weigh all criteria, including GRE® scores

Ensure fairness by looking at a student overall. Consider the limitations of any single measure of knowledge, skills or abilities.

Don't use cut scores

Using a cut score might cause you to lose out on an applicant who would otherwise be a great asset to your program.



Do consider the 3 GRE® General Test scores independently

Verbal reasoning, quantitative reasoning and analytical writing requirements vary per field. Focusing on a total score may mask critical insight into a student's specific skills.

Don't accept score reports from any source other than ETS

To ensure the authenticity of scores, only accept reports directly from ETS. Verify applicant scores and photos through ETS Data Manager.



Do use percentile ranks to compare applicants

When you're comparing applicants who took the GRE test, use the most recent percentile ranks. Don't use percentile ranks to compare applicants across different tests (e.g., GRE with GMAT® or LSAT® scores).

Visit ets.org/gre for more information about using and interpreting GRE scores, test validity and holistic admissions.